



| TIA Selection Tool

Release Notes V2025.12

Features – 2025.12

Only available in offline version

- **Integrated drive dimensioning** (see [here](#))
- **Control Panel Design** - Electrical dimensioning of main circuits according to UL (see [here](#))

Only available in cloud version

- **Preview version**: Electrical dimensioning of **main circuits** according to IEC (see [here](#))
- Re-shaped **DC 24 V consumer view**: improved UI, new features



Product updates – 2025.12

Controllers and I/O systems

- **ET 200SP**
 - For station expansion with ET 200AL: new modules CM 4x IO-Link (6ES7147-5JD01-0BA0) and CM 8x IO-Link (6ES7147-5JJ00-0BA0)
- **ET 200SP HA**
 - SIWAREX WP341 HF weighing module (7MH4138-6CA00-0CU0) added

Industrial PCs

- Various Updates incl. software packages

Industrial Communication

- New SCALANCE XCM-108 devices
- New Compact Switch Module CSM 1277 G2 (6GK7277-1AA50-0AA0) and push-in, 6 Pins, tin-coated (4/Pk) (6ES7292-2AF50-0XA0)
- New Antenna ANT895-6ML, GPS, 6GK5895-6ML10-0AA0

Software

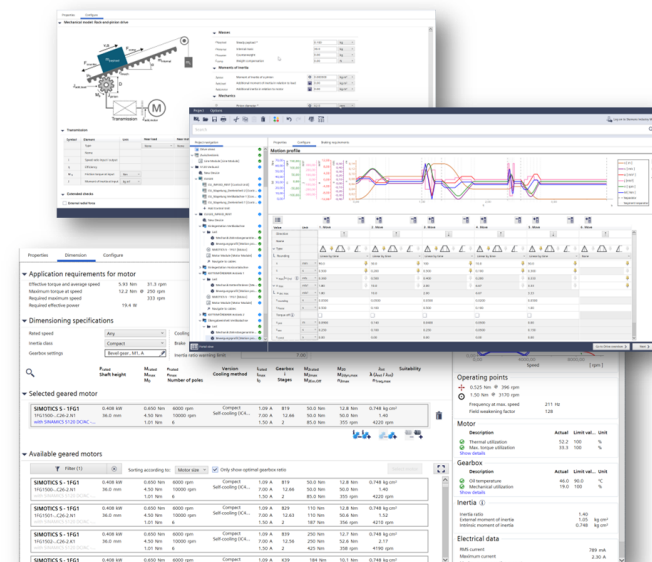
- TIA Portal V21 – added to catalog, orderable in SiePortal, configuration coming soon



Features of the integrated drive dimensioning – 2025.12

New functionalities and products

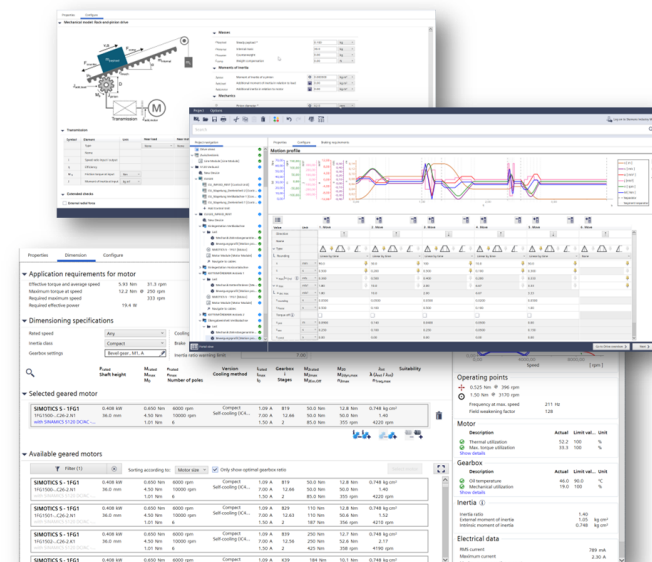
- Extension of the drive design for **24 / 48 V** voltages to include motors with integrated inverters from the K4, SP K4, K5C, and K5E series. The **1EE1** and **1EV1** motors, **with** and **without gearboxes**, are located below the new 'Integrated Inverter' selection field within the portfolio selection.
- Expansion of the Innomotics **1FZ Permanent Magnet Motors** to include variants in the **1FZ5** design
 - Power range from 18.5 – 90 kW in shaft heights 180, 225
 - Motors with energy efficiency class IE5
- In the selection dialog for cables, the **connectable cable cross-sections** for both the **motor** and **inverter side** are now displayed. This makes it quicker to see which cable solutions are suitable and provides valuable information in cases where no cable selection option is available.



Features of the integrated drive dimensioning – 2025.12

Changes of functionalities and products, bugfixes

- **IMPROVEMENT:** Performance improvement when assigning axes to Control Units in projects with many axes (Ticket 69272)
- **BUGFIX:** Fixed an error that prevented the display of the second DQ port in the DRIVE-CLiQ Editor for an SMC40 (Ticket 72085)
- **BUGFIX:** Fixed a display error that showed the RMS current on the motor side differently from the inverter side when devices with active infeed were selected (Ticket 72241)
- **UPDATE:** S120 Combi - Brakes in expansion axes in S120 Combi systems are no longer included in the check of internal axis brakes (Ticket 71836)
- **UPDATE:** S120 Combi – The selection of Terminal Kits has been removed (Ticket 72134)
- **UPDATE:** S120 Combi – Update of the description of the VSM (Voltage Sensing Modules) used (Ticket 72134)
- **UPDATE:** Update of text descriptions for various products, messages, and display texts (Ticket 71888)
- **EXTENSION:** ELV – In the 24/48 V design, cable solutions from third-party manufacturers that do not follow the Siemens MLFB scheme and are not listed as Solution Partner products can now also be offered (Ticket 71250).
- **BUGFIX:** 24 V – Inclusion of brake and SMI of the second axis of a Double Motor Module in the 24 V view (Ticket 71517)
- **BUGFIX:** 1FP1 – Change of the default selection for the connection voltage for brakes (Ticket 71288)
- **BUGFIX:** 1FT2 – Update of the configuration logic to enable the previously missing selection of variant 1FT2104-5AF00-3CB0 (Ticket 70829)
- **BUGFIX:** 1PH8 with gearbox attachment – Cleanup of the offered variants for gearbox attachment, so that a user does not only see after selecting a device that it is not available (Ticket 69787)
- **UPDATE:** 2KJ3 – Change of allowed encoder options for 2KJ3 motors – Removal of options Q80/Q81 and inclusion of Q77/Q78 (Ticket 71552)
- **UPDATE:** G120/S110/S120 AC/AC – When selecting a CU250S-2 DP or CU250S-2 PN, the PROFIsafe option is now selected by default (Ticket 71967)
- **UPDATE:** G150 – Revision of the selection of Marine options (M66, E51) depending on the selection of auxiliary power supply (Ticket 71238)
- And others



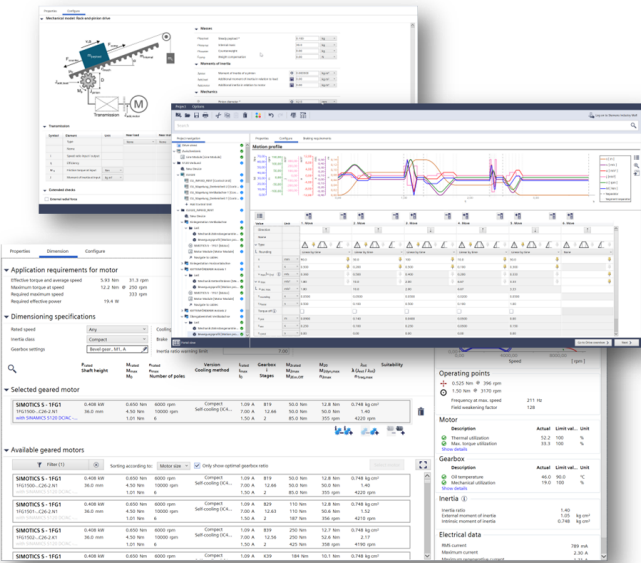
Features of the integrated drive dimensioning – 2025.12

Not supported

- Help system: There is no special help system provided beside the PDF user documentation (link: [SIZER User Documentation](#))
- Import of SIZER 3 projects is not possible

Known issues

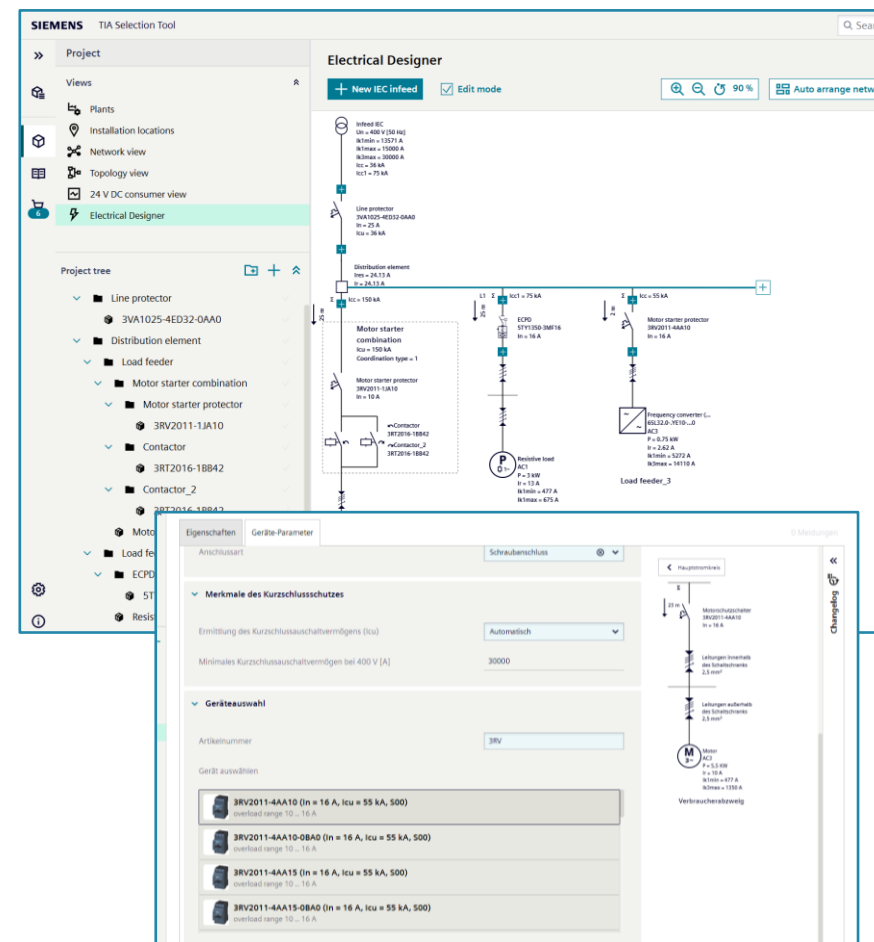
- Projects older than V2020.12 are not supported anymore. Use an older TIA Selection Tool version to open and convert such projects. If you need assistance with this, please contact us.
- For S120 Chassis-2 and S120 Chassis liquid-cooled line modules DC link fuses and pre-charge contactor are missing
- For S120 Chassis/Chassis-2: compatibility check for MASTERDRIVES braking modules is not available
- The current calculation for permanent magnet synchronous servo motors in the field weakening range (operation to the right of the voltage limit curve) delivers wrong results in some special cases. Calculation model will be improved in the future
- 1FK2 with planetary gears - Filtering and sorting currently not according to the system values



Features of Electrical Designer (cloud version only) – 2025.12

New in version 2025.12

- Power sockets can now be added as a load to an IEC main circuit. RCBOs, ECPD and user-defined devices are supported for protection.
- Feeders with hybrid starters (ET 200SP): Entire ET 200SP load groups can now be created. The selected motor starters can be assigned to the corresponding ET 200SP stations. Necessary basic modules are determined automatically. There is automatic synchronization between the ET 200SP configuration and the view in the Electrical Designer.
- Fuses: You can now select gG and aM fuses.
- Fuse accessories: Fuse holders (3NH), fuse switch-disconnectors (3NP1) and switch-disconnectors with fuses (3KF) can be selected for fuses.
- Larger contactors in tested combinations: Larger contactors can now be selected for tested motor starter combinations. This is only possible as long as the size of the contactors does not change.
- Various optimizations, data updates and performance improvements have been made.



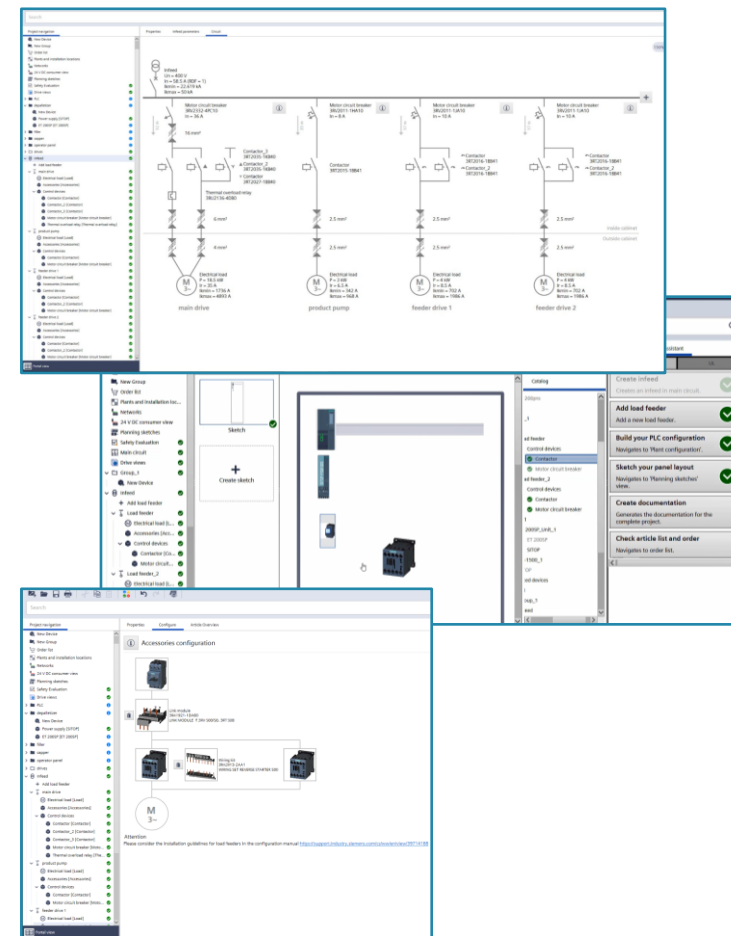
Features of Control Panel Design (desktop version only) – 2025.12

New functionalities – since Version 2023.12

- New frequency converter and drive systems for IEC circuits available.
- Optimized configuration workflow for soft starter combinations for IEC circuits.
- Optimized cable dimensioning for soft starter in IEC and US circuits.
- Minor improvements and bug fixes

ATTENTION:

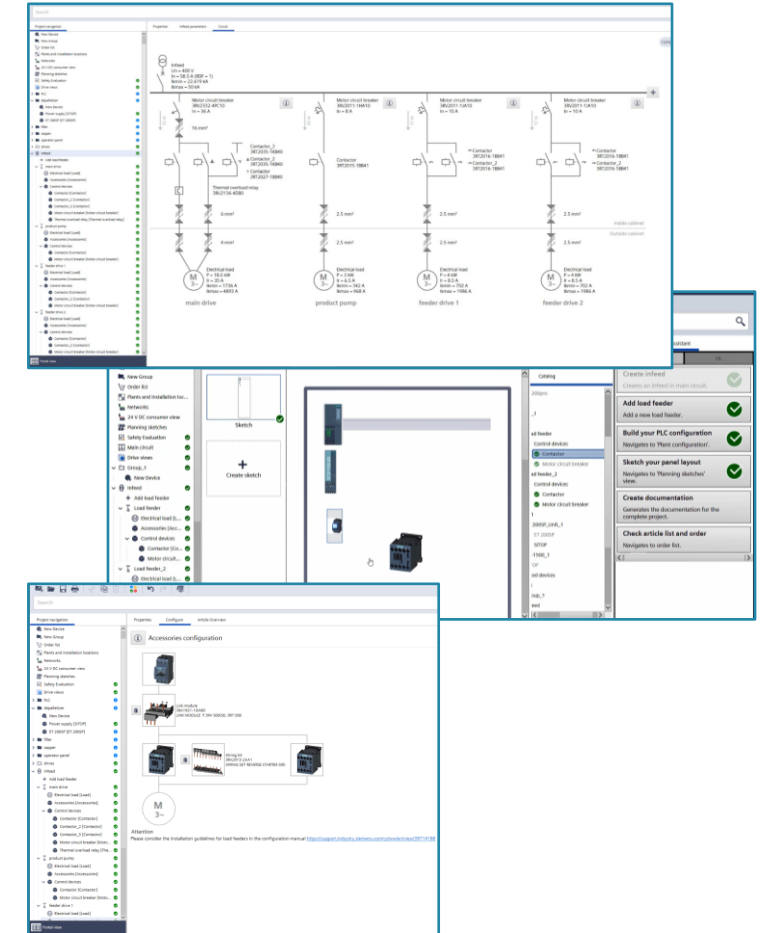
Some features are Beta features and not fully tested. They can contain errors. A hint is shown in the software when you calculate the first device or load feeder combination.



Features of Control Panel Design (desktop version only) – 2025.12

Known issues

- Currently there are no soft starter combinations with 3TF contactors available.
- After loading a project which was saved with an older version of TIA Selection Tool, some load feeders can become invalid and need to be recalculated.



- | **Release Notes V2025.11 (see [here](#))**
- | **Release Notes V2025.10 (see [here](#))**
- | **Release Notes V2025.09 (see [here](#))**

Features – 2025.11

Only available in offline version

- **Integrated drive dimensioning** (see [here](#))
- **Control Panel Design** - Electrical dimensioning of main circuits according to UL (see [here](#))
- **SINUMERIK** - New Hard- and Software
 - SINUMERIK ONE CNC-SW 6.25 SP1
 - SINUMERIK 828D PPU290.5
 - SINUMERIK MCP 1500U

Only available in cloud version

- **Preview version**: Electrical dimensioning of **main circuits** according to IEC (see [here](#))
- Usability improvements in the project navigation view
- New device type **SIMATIC ET 200BL**



Product updates – 2025.11

Controllers and I/O systems

- **New ET 200BL**
 - SIMATIC ET 200BL I/O system is a cost optimized, distributed I/O system with degree of IP20. Via interface module, it can exchange IO data of the connected I/O modules with a higher-level PLC. This system offers an attractive option with optimized functionality while maintaining SIMATIC quality standards and fit for different markets and industries.
- **ET 200AL**
 - Improved Accessories dialog for IO-link master modules
- **S7-1500**
 - New rules for Motion Control → Flexible Conveyance Solutions (FCS) – easier selection of suitable CPUs

Industrial PCs

- Various Updates incl. software packages

Industrial Communication

- New Communication Processor CP 443-1 (6GK7443-1EX31-0XE0)
- New SFP-Modules for SCALANCE XCM102 (6GK5102-1GS00-2AC2), XCM108PoE (6GK5108-2RS00-2AC2) and XCH108PoE (6GK5108-2RS00-2FC2)

Software

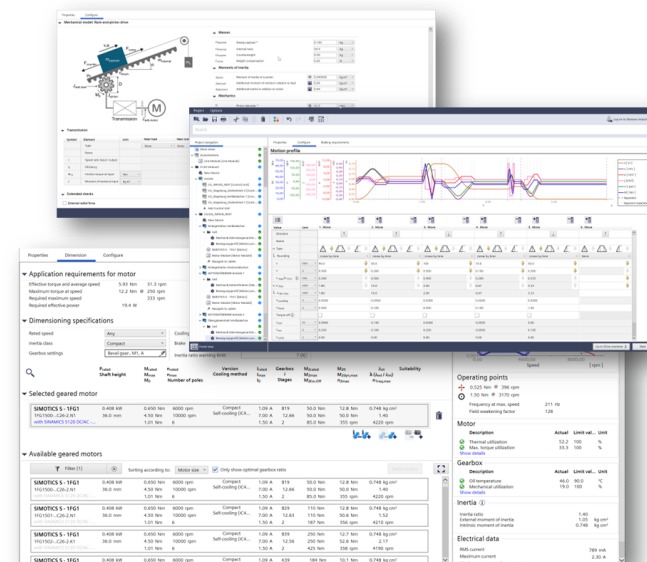
- New TIA Portal Subscriptions



Features of the integrated drive dimensioning – 2025.11

New functionalities and products

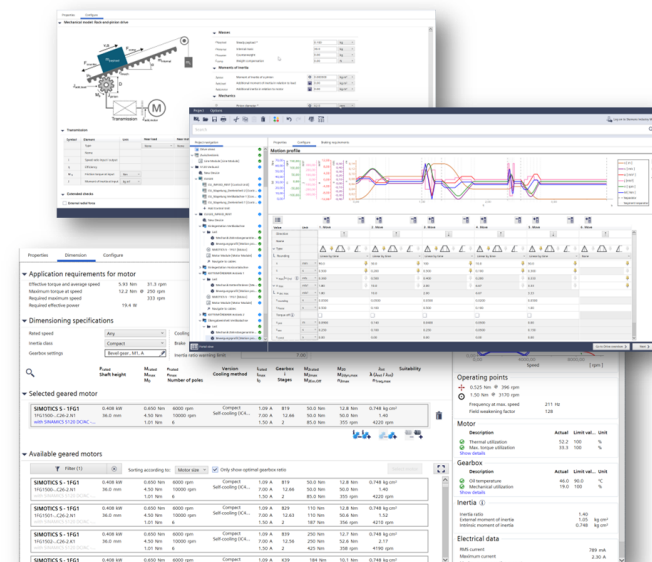
- The configuration of **SINAMICS Capacitor Modules** is now possible in the DC link arrangement view of SINAMICS S120 Booksize Systems. The modules can be added in the "Additional Components" section and can be arranged with the other DC link components. A check is performed to determine whether the precharge limit of the DC link is exceeded.
- The settings in the portfolio dialog "**Safety Integrated Functions**" regarding SIL (Safety Integrated Level) and the need for encoders for the selected Safety Integrated functions are now checked more rigorously during the selection of drive components. Restrictions in the portfolio, error messages, and notes support the design of a configuration that meets the selected requirements.



Features of the integrated drive dimensioning – 2025.11

Changes of functionalities and products, bugfixes

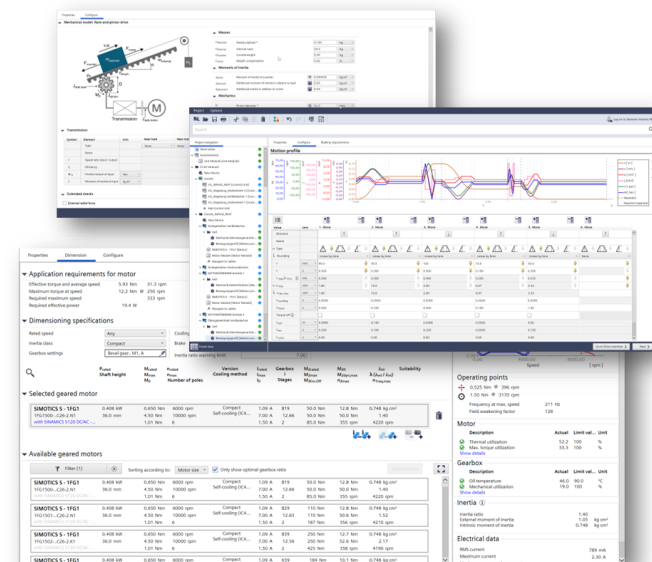
- **UPDATE:** Innomotics Motors and Gearboxes – For retrieving data sheets and further documents for integrated Innomotics products, reference is now made to the Innomotics Configurator (Ticket 70899)
- **UPDATE:** Due to product discontinuation and type deletion, S210 devices with milestone PM410 (SIOS 109973773) have been removed. Successor products are the already available S210 "New" devices (Ticket 68590, 68587)
- **UPDATE:** Due to product discontinuation and type deletion, the following Control Units have been removed: CU250D-2 PN-F FO, CU250-2 DP-F, CU240D-2 PN-F FO, CU240D-2 DP-F, CU240D-2 DP, CU250-S-2 CAN (Ticket 68595)
- **UPDATE:** Due to product discontinuation, SINAMICS S120 Smart Line Modules 36/55 kW (SIOS 109989997) have been removed (Ticket 68588)
- **UPDATE:** The availability of the product combination SINAMICS V90 with SIMOTICS 1FL6 has been restricted to the region China due to product discontinuation outside of China. The successor solution is SINAMICS S200 with SIMOTICS 1FL2 (Ticket 68589)
- **BUGFIX:** 1PH8 – Correction of the motor characteristic curve for Motor 1PH8226-1.L1 for operation with SINAMICS G120 and voltage 3AC 480V (Ticket 70164)
- **BUGFIX:** 1PH3 – Correction of voltage limits to enable operation in combination with S120 SLM (Ticket 70905)
- **BUGFIX:** 2KJ3 – Deletion of non-permitted KU adapters (Ticket 68153)
- **BUGFIX:** Motion Connect – Correction of description texts for MOTION-CONNECT 500/700/800 PLUS cables (Ticket 71403)
- **UPDATE:** ELV – Update of product data for EtaCrownPlus gearboxes (Ticket 66398)
- **UPDATE:** ELV – Addition of product images for the converter series VTD K4/K5C/K5E (Ticket 63967)
- **UPDATE:** ELV – Addition of product images for ECI Motors (1EE1) (Ticket 64593)
- **UPDATE:** ELV – Addition of product images for VD Motors (1EV1) (Ticket 66401, 63964)
- **IMPROVEMENT:** When selecting external braking resistors, a check is now performed against the power values of the installed braking module (Ticket 61903)
- **UPDATE:** Sx20 – After adding additional DC links within a multi-axis system, axes in the new DC link are now defined as a multi-axis system by default (Ticket 70749)
- **BUGFIX:** 1FW6 – Correction of a configuration error for 1FW6 motors (Ticket 71287)



Features of the integrated drive dimensioning – 2025.11

Changes of functionalities and products, bugfixes

- **BUGFIX:** ELV – Correction of an error that could cause a program crash when combining 1EE1 motors with SIMATIC F-TM Servo Drive (Ticket 70473)
- **BUGFIX:** ELV – Correction of an error that incorrectly allowed the selection of option N11 for 1EE1 motors in combination with gearboxes (Ticket 71226)
- **UPDATE:** ELV – The selection of encoders has been restricted for motors 1EE14 (ECI-80) (Ticket 71026)
- **BUGFIX:** 2KJ3 – Correction of incorrect gearbox ratios for gearbox D109Z39 (Ticket 70038)
- **BUGFIX:** S120 – Correction of an error that incorrectly declared AIM devices as obsolete (Ticket 70667)
- **BUGFIX:** S210 – Correction of a malfunction that prevented the selection of a controller (PLC) in coupled S210 systems (Ticket 71106)
- **BUGFIX:** Correction of an error that prevented values from being determined via selection dialog for entering the additional factor in external radial force definition (Ticket 70828)
- **BUGFIX:** 24 V – Deletion of no longer required ports in the 24 V design when switching from an S120 Booksize System to an S120 Combi System (Ticket 70824)
- **BUGFIX:** 24 V – When using dual-axis modules, the 24 V power consumption for brakes and encoders of the 2nd axis is now also considered (Ticket 71517)
- **UPDATE:** Support for SINUMERIK 828D PPU 290.5 added (Ticket 70903)
- **IMPROVEMENT:** 24 V – Transition from text buttons to icon buttons for the 24 V design improves understanding and enhances display on low-resolution screens (Ticket 49013)
- **UPDATE:** SINAMICS Configurators (G120C, S150, G150, G220) – Update of configuration data based on SPC Version October 2025
- **UPDATE:** SIMOTICS Configurators (1FW6, 1FK2, 1PH8) – Update of configuration data based on SPC Version October 2025
- And others



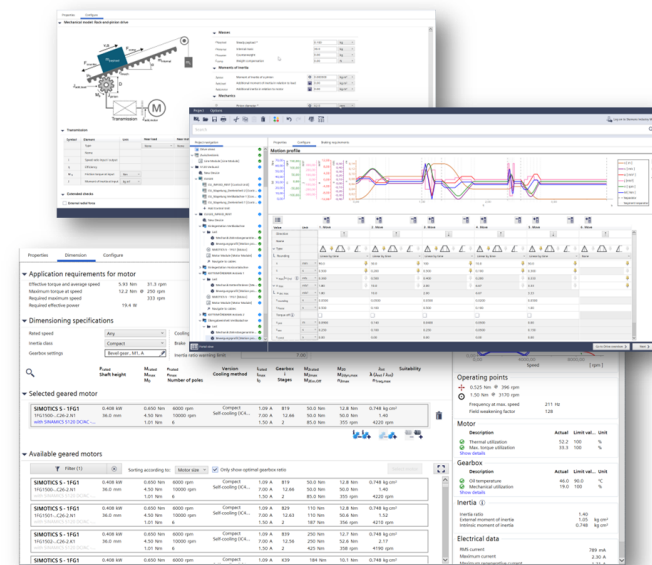
Features of the integrated drive dimensioning – 2025.11

Not supported

- Help system: There is no special help system provided beside the PDF user documentation (link: [SIZER User Documentation](#))
- Import of SIZER 3 projects is not possible

Known issues

- Projects older than V2020.12 are not supported anymore. Use an older TIA Selection Tool version to open and convert such projects. If you need assistance with this, please contact us.
- For S120 Chassis-2 and S120 Chassis liquid-cooled line modules DC link fuses and pre-charge contactor are missing
- For S120 Chassis/Chassis-2: compatibility check for MASTERDRIVES braking modules is not available
- The current calculation for permanent magnet synchronous servo motors in the field weakening range (operation to the right of the voltage limit curve) delivers wrong results in some special cases. Calculation model will be improved in the future
- 1FK2 with planetary gears - Filtering and sorting currently not according to the system values



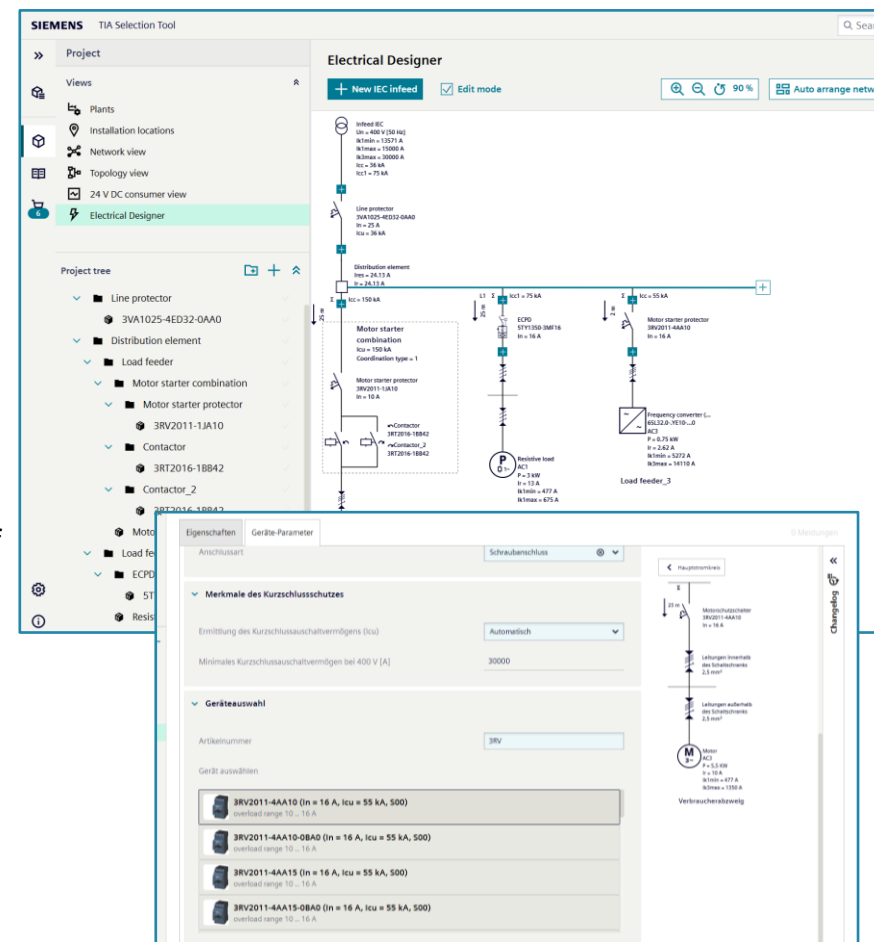
Features of Electrical Designer (cloud version only) – 2025.11

New in version 2025.09

- Design of motor starter combinations for safety applications: Tested motor starter combinations can now be designed for safety applications. The required safety level, the type of overdimensioning and redundancy can be set, and the Electrical Designer calculates suitable motor starter combinations.
- Load feeders with Hybrid Starters (ET 200SP): Load feeders with Hybrid Starters (ET 200SP) can now be configured. The Electrical Designer calculates suitable load feeders with Hybrid Starters according to your inputs and performs a cable dimensioning.
- Motor starter combinations with intelligent link modules (3RC7): Combinations with reversing starter are now supported.
- Excepted circuits: Circuits can be configured below the infeed point that are excluded from switching-off by the main switch. With this functionality it is e.g. possible to design circuits for lighting or connecting equipment for maintenance work.
- Cable dimensioning above distribution elements: Cable dimensioning is now performed for the cable section between the distribution element and the protection device above.
- Flexible adjustment of cable properties: The cable properties can now be set separately for each section.

ATTENTION:

With the exception of load feeders with type tested motor starter combinations and approved protection devices for frequency converters, cable dimensioning is currently in beta status.



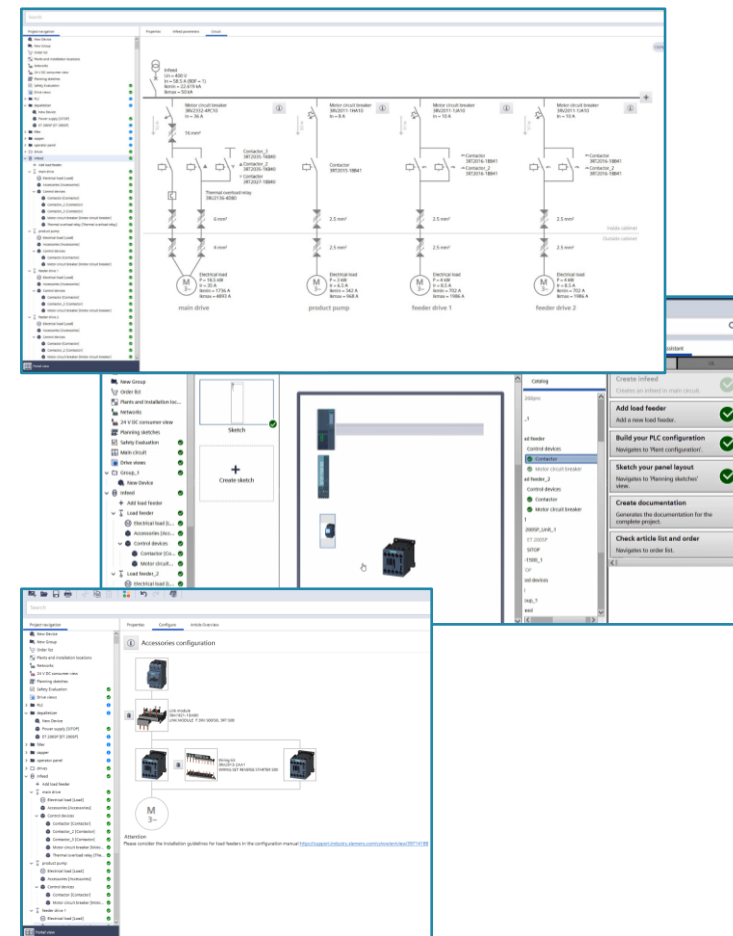
Features of Control Panel Design (desktop version only) – 2025.11

New functionalities – since Version 2023.12

- New frequency converter and drive systems for IEC circuits available.
- Optimized configuration workflow for soft starter combinations for IEC circuits.
- Optimized cable dimensioning for soft starter in IEC and US circuits.
- Minor improvements and bug fixes

ATTENTION:

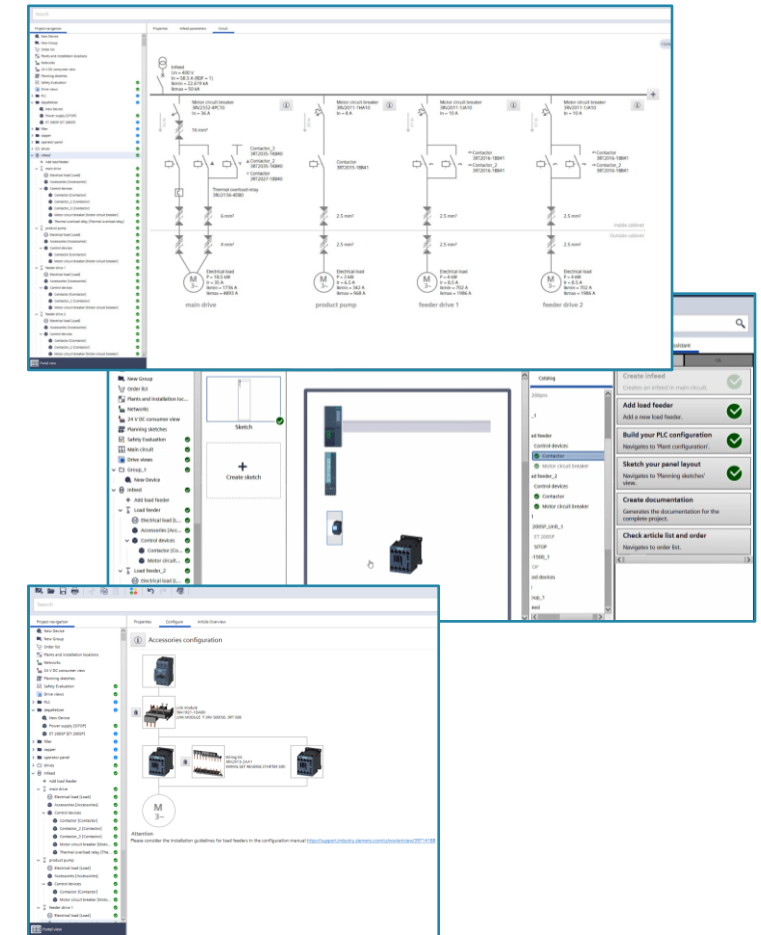
Some features are Beta features and not fully tested. They can contain errors. A hint is shown in the software when you calculate the first device or load feeder combination.



Features of Control Panel Design (desktop version only) – 2025.11

Known issues

- Currently there are no soft starter combinations with 3TF contactors available.
- After loading a project which was saved with an older version of TIA Selection Tool, some load feeders can become invalid and need to be recalculated.



Features – 2025.10

Only available in offline version

- **Integrated drive dimensioning** (see [here](#))
- **Control Panel Design** - Electrical dimensioning of main circuits according to UL (see [here](#))

Only available in cloud version

- **Preview version**: Electrical dimensioning of **main circuits** according to IEC (see [here](#))
- New **3SK configurator**
- Support **AML** Ex-/Import
 - **S7-1200 G2**



Product updates – 2025.10

Controllers and I/O systems

- **ET 200MP / S7-1500**
 - Fully modular system cabling and flexible connection technology with 4 modules : 6ES7521-1BH00-0AB0, 6ES7521-1BL00-0AB0, 6ES7521-7BH00-0AB0, 6ES7536-1MF00-0AB0
 - New Power Modules SIMATIC PM 1507/1AC/24VDC/3A/EX (6EP1332-4BA00-8AA0) and PM 1507/1AC/24VDC/8A/EX (6EP1333-4BA00-8AA0)
- **ET 200eco PN**
 - New labeling plates (6ES7194-6HA00-0AA0)

Industrial PCs

- Various Updates incl. software packages

Industrial Communication

- Various new SIMATIC NET software products

Power Supplies

- New SITOP PSU8400/3AC/DC24V/20A IOL (6EP3436-8SB00-4AY0)

Software

- New SIMATIC Energy products

VDMA

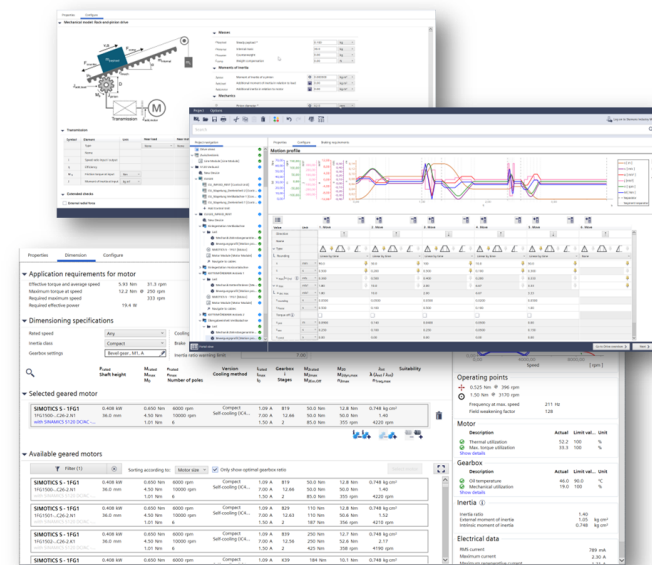
- Update to version 1.26.0



Features of the integrated drive dimensioning – 2025.10

Changes of functionalities and products, bugfixes

- **BUGFIX:** Change in the determination of load profiles (M/n and P/n) over time to avoid faulty power peaks during segment changes in the motion profile (Ticket 69792)
- **IMPROVEMENT:** 24 V – The 24 V power consumption for brakes, SME and SMI is now also considered and displayed for chassis devices in the DC 24 V consumer view (Ticket 69910, 69088)
- **BUGFIX:** 1FW3 – Correction of the S1 characteristic curve for motor 1FW3287-3.P-.... when operated with at a Smart Line Module (Ticket 67116)
- **BUGFIX:** 1PH8 – Adjustments to available power cables for 1PH8 with shaft height 180 and larger (Ticket 66017, 70082)
- **UPDATE:** G220 – For the selection of G220 with 1FK7, 1FG1, 1FW3 and 1PH8, power cables can now be selected (Ticket 68724)
- **UPDATE:** 1FG1 – For the operation of 1FG1 motors with S210, cables with 2-cable technology can now be selected (Ticket 70020).
- **BUGFIX:** 24 V – Correction of an inconsistency in the naming of 24 V consumer groups within the "24 V busbars" view (Ticket 70239)
- **BUGFIX:** 24 V – In the DC 24 V consumer view Chassis Motor Modules are now correctly stated as Motor Modules (Ticket 70238)
- **BUGFIX:** CSM – Correction of an error in the manual wiring of CSM devices using 24 V bridges within the "24 V busbars" view (Ticket 70429)
- **IMPROVEMENT:** Minor improvements when switching from an S120 AC/AC system with CU Adapter (CUA) and assigned controller to a multi-axis drive system (Ticket 69797)
- **UPDATE:** S120/S220 – It is now possible to select more than one motor reactor for selected S120/S220 Motor Modules (Ticket 42461)
- **UPDATE:** S120/S220 – If a Line Module is potentially overloaded, a note is now given that the user needs to check the overload and suitability of the selected Line Module (Ticket 68655)
- And others



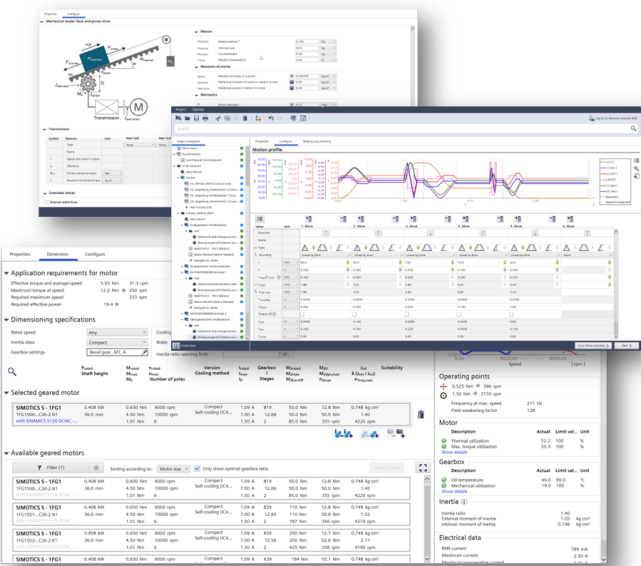
Features of the integrated drive dimensioning – 2025.10

Not supported

- Help system: There is no special help system provided beside the PDF user documentation (link: [SIZER User Documentation](#))
- Import of SIZER 3 projects is not possible

Known issues

- Projects older than V2020.12 are not supported anymore. Use an older TIA Selection Tool version to open and convert such projects. If you need assistance with this, please contact us.
- For S120 Chassis-2 and S120 Chassis liquid-cooled line modules DC link fuses and pre-charge contactor are missing
- For S120 Chassis/Chassis-2: compatibility check for MASTERDRIVES braking modules is not available
- The current calculation for permanent magnet synchronous servo motors in the field weakening range (operation to the right of the voltage limit curve) delivers wrong results in some special cases. Calculation model will be improved in the future
- 1FK2 with planetary gears - Filtering and sorting currently not according to the system values



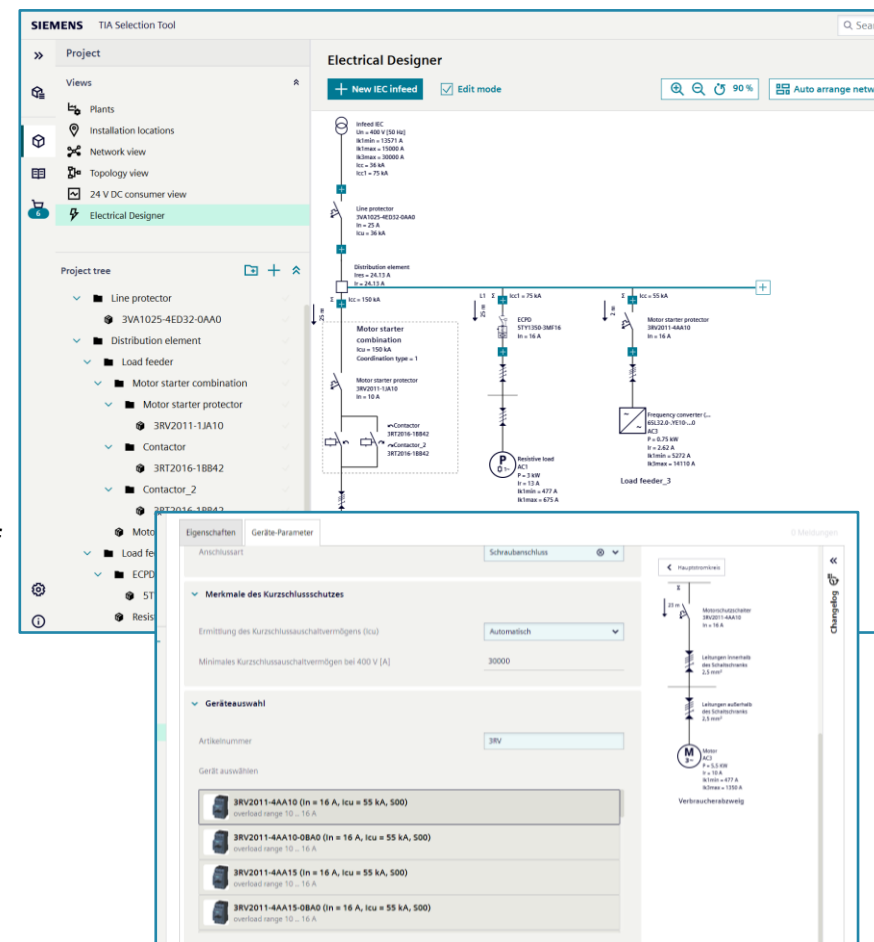
Features of Electrical Designer (cloud version only) – 2025.10

New in version 2025.09

- Design of motor starter combinations for safety applications: Tested motor starter combinations can now be designed for safety applications. The required safety level, the type of overdimensioning and redundancy can be set, and the Electrical Designer calculates suitable motor starter combinations.
- Load feeders with Hybrid Starters (ET 200SP): Load feeders with Hybrid Starters (ET 200SP) can now be configured. The Electrical Designer calculates suitable load feeders with Hybrid Starters according to your inputs and performs a cable dimensioning.
- Motor starter combinations with intelligent link modules (3RC7): Combinations with reversing starter are now supported.
- Excepted circuits: Circuits can be configured below the infeed point that are excluded from switching-off by the main switch. With this functionality it is e.g. possible to design circuits for lighting or connecting equipment for maintenance work.
- Cable dimensioning above distribution elements: Cable dimensioning is now performed for the cable section between the distribution element and the protection device above.
- Flexible adjustment of cable properties: The cable properties can now be set separately for each section.

ATTENTION:

With the exception of load feeders with type tested motor starter combinations and approved protection devices for frequency converters, cable dimensioning is currently in beta status.



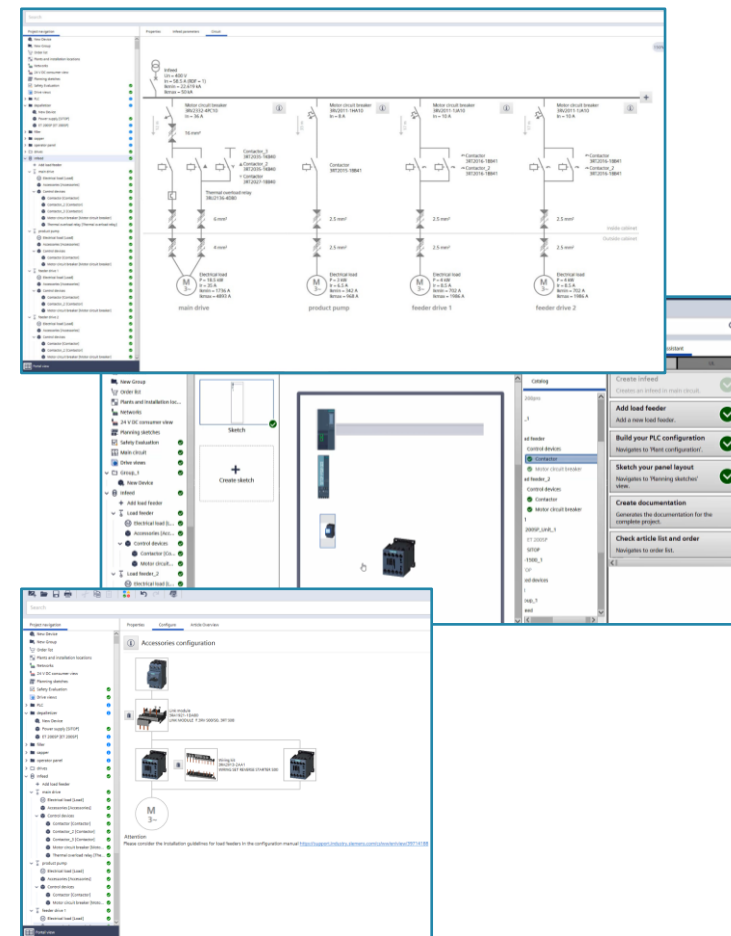
Features of Control Panel Design (desktop version only) – 2025.10

New functionalities – since Version 2023.12

- New frequency converter and drive systems for IEC circuits available.
- Optimized configuration workflow for soft starter combinations for IEC circuits.
- Optimized cable dimensioning for soft starter in IEC and US circuits.
- Minor improvements and bug fixes

ATTENTION:

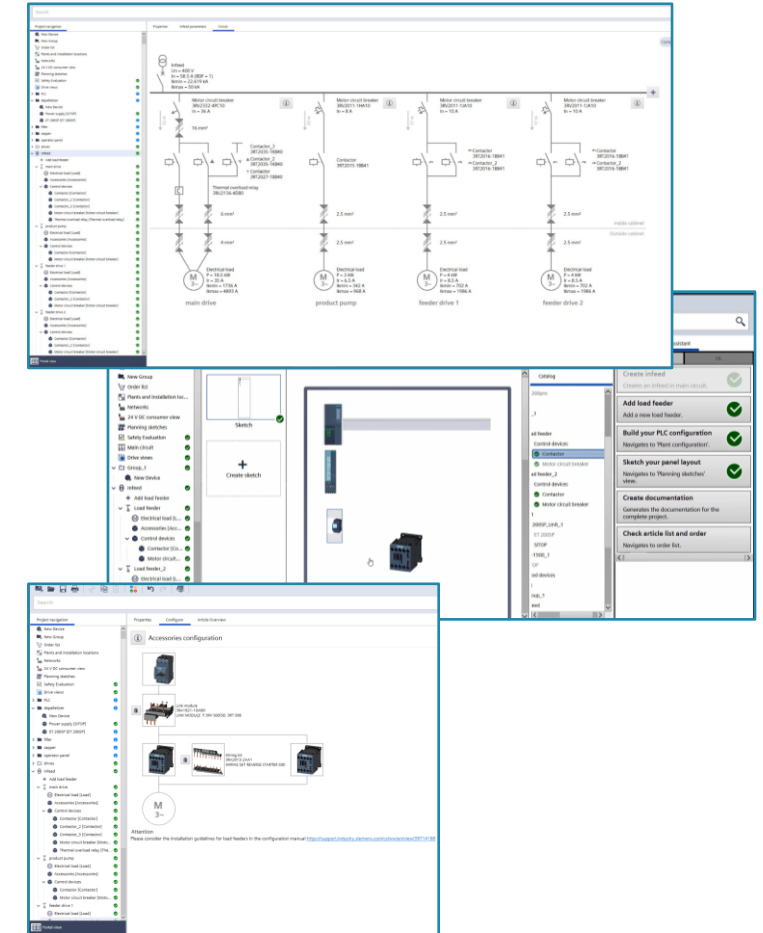
Some features are Beta features and not fully tested. They can contain errors. A hint is shown in the software when you calculate the first device or load feeder combination.



Features of Control Panel Design (desktop version only) – 2025.10

Known issues

- Currently there are no soft starter combinations with 3TF contactors available.
- After loading a project which was saved with an older version of TIA Selection Tool, some load feeders can become invalid and need to be recalculated.



Features – 2025.09

Only available in offline version

- **Integrated drive dimensioning** (see [here](#))
- **Control Panel Design** - Electrical dimensioning of main circuits according to UL (see [here](#))

Only available in cloud version

- **Preview version**: Electrical dimensioning of **main circuits** according to IEC (see [here](#))
- **Safety Evaluation**: Dialog for "Determine DC" available in the React subsystem
- Support **AML** Ex-/Import
 - **SIMOCODE M-CP**
 - **SIMATIC ET 200clean**



Product updates – 2025.09

Controllers and I/O systems

- **ET 200SP**
 - Configuration option for BaseCarrier articles
- **ET 200AL**
 - CM 8x IO-Link, 8x M12 (6ES7147-5JJ00-0BA0) added
 - CM 4x IO-Link, 4x M12 (6ES7147-5JD01-0BA0) added
 - Voltage Distributor PD 24VDC; 1xM12-L, 4xM8 (6ES7194-2CA00-0AA0) added
- **ET 200iSP**
 - Adjustments regarding current values in the limits

Industrial PCs

- Various Updates incl. software packages

Panels

- New product overview for SIMATIC HMI Unified Basic Panels
- Updates for RFID Reader

Industrial Communication

- Various changes to compact RTUs
- Telecontrol Selection Wizard Update
- SCALANCE XC-400 devices available in DC 24 V consumer view
- Removal of SIMATIC RTLS Configurator

Industrial Controls

- SIMOCODE: Update of information regarding software

Braumat

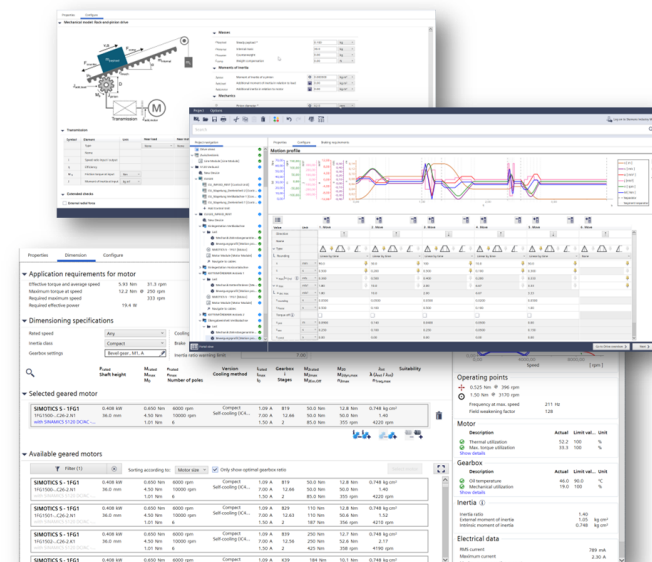
- New CPUs available



Features of the integrated drive dimensioning – 2025.09

New functionalities and products

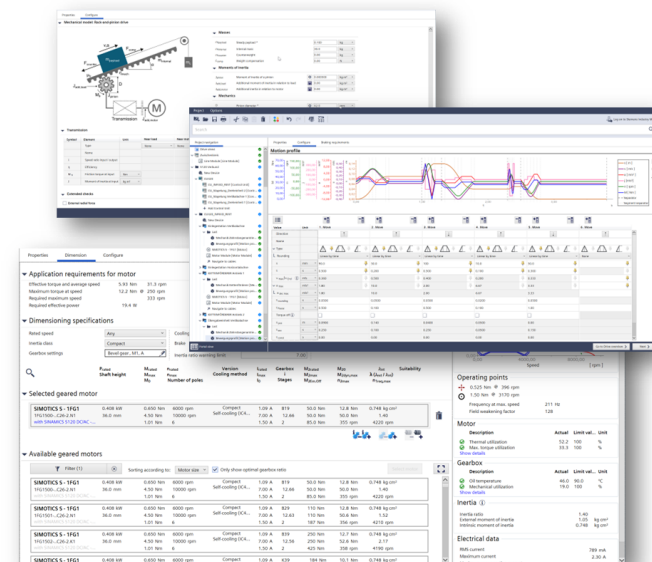
- The configuration of **Main/Sub** systems is now possible through the load distribution area. The configuration can be done in conjunction with mechanical systems and allows the load distribution across 2 axes.
- It is now possible to add **Control Supply Module (CSM)** to the DC link. The CSM devices can be created and arranged in the “DC link arrangement” view. In the “24 V DC consumer” view, the CSM devices can be assigned to consumers.
- **1FG1** motors can now be sized with the **S210** servo drive. Notifications provide information about possible limitations in some combinations. Cables for power and DRIVE-CLiQ will be added in one of the next versions.
- The design of extra-low voltage drives has been extended with the selection of **crown wheel gearbox** units from the **EtaCrown (EC)** and **EtaCrownPlus (EP)** series. An additional check provides information on the utilization of the gearbox. The portfolio will be gradually expanded in the future.
- It is now possible to select synchronous motors of the **1PH8**, **1FK7**, **1FG1** and **1FW3** series in combination with **G220** converters. Cables for power will be added in the next version.



Features of the integrated drive dimensioning – 2025.09

Changes of functionalities and products, bugfixes

- **BUGFIX:** 1FN3 – Addition of power cables for self-cooled 1FN3 motors (Ticket 69819)
- **UPDATE:** 2KJ3 – Revision of permitted gearbox combinations for adapter mounting (Ticket 67852)
- **UPDATE:** 2KJ3 – Addition of a note when using motors with 500 V winding (Ticket 68011)
- **BUGFIX:** G220 – Correction of an error in the configuration when selecting standard fuses (Ticket 69097)
- **BUGFIX:** 1EV1 – Correction of an error in the configuration that prevented creation of a default configuration (Ticket 69447)
- **BUGFIX:** 1EE1/1EV1 – Revision of the product search for the 1EE1/1EV1 portfolio, so that it now correctly indicates whether a product was found or an alternative solution (Ticket 69298)
- **EXTENSION:** G220 – Extension of the configuration to include selections regarding SINAMICS SDI Pro 5.5", dV/dt filter plus VPL and additional services (Ticket 68998)
- **UPDATE:** Revision of the color selection for motor series 1FG1, 1FK7, 1FT7, 1FW3 and 1PH8 due to the discontinuation of rarely used color variants, see SIOS article 109989652 (Ticket 68780)
- **BUGFIX:** Gantry – Correction of a malfunction in the status display for the following axis when changing the mounting type from wall-mounted to motor-mounted (Ticket 68903)
- **BUGFIX:** Rotary table – Correction of an error that did not allow speed 0 at the end of the motion profile during step-by-step input (Ticket 69771)
- **IMPROVEMENT:** S120 – The derating of the output current depending on the selected pulse frequency at speed 0 is now set dependent on the selected motor technology (synchronous/asynchronous motor) and the selected Booksize type C/D (Ticket 66883)
- **BUGFIX:** 1LE5 – Extension of the selection of motors with 60 Hz / 480 V winding on 50 Hz / 480 V power supply (Ticket 69442)
- **UPDATE:** 1FW6 – Motors with "2" at MLFB position 8 (delivery of stator and rotor not assembled) were removed due to product discontinuation (67905)
- **UPDATE:** SIMOTICS configurators (1FK2, 1FG1) – Update of configuration data based on SPC version August 2025
- And others



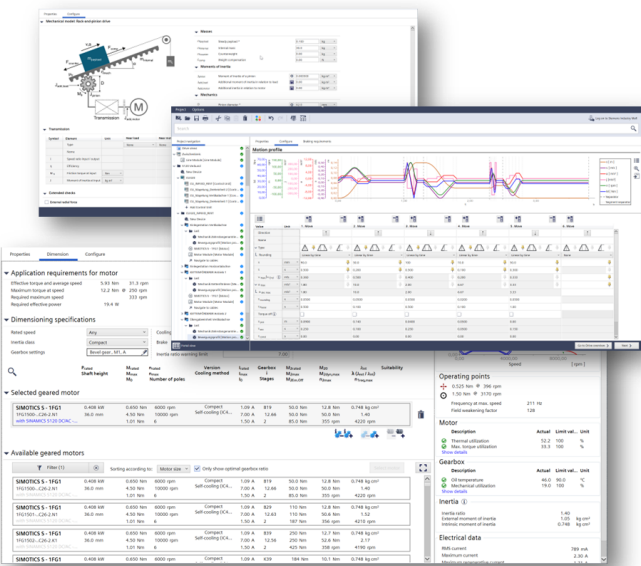
Features of the integrated drive dimensioning – 2025.09

Not supported

- Help system: There is no special help system provided beside the PDF user documentation (link: [SIZER User Documentation](#))
- Import of SIZER 3 projects is not possible

Known issues

- The 24 V power consumptions for brakes, SMI, SME are currently not considered in the 24 V design. For now, please provide a current reserve for this when configuring the SITOP devices.
- Projects older than V2020.12 are not supported anymore. Use an older TIA Selection Tool version to open and convert such projects. If you need assistance with this, please contact us.
- For S120 Chassis-2 and S120 Chassis liquid-cooled line modules DC link fuses and pre-charge contactor are missing
- For S120 Chassis/Chassis-2: compatibility check for MASTERDRIVES braking modules is not available
- The current calculation for permanent magnet synchronous servo motors in the field weakening range (operation to the right of the voltage limit curve) delivers wrong results in some special cases. Calculation model will be improved in the future
- 1FK2 with planetary gears - Filtering and sorting currently not according to the system values



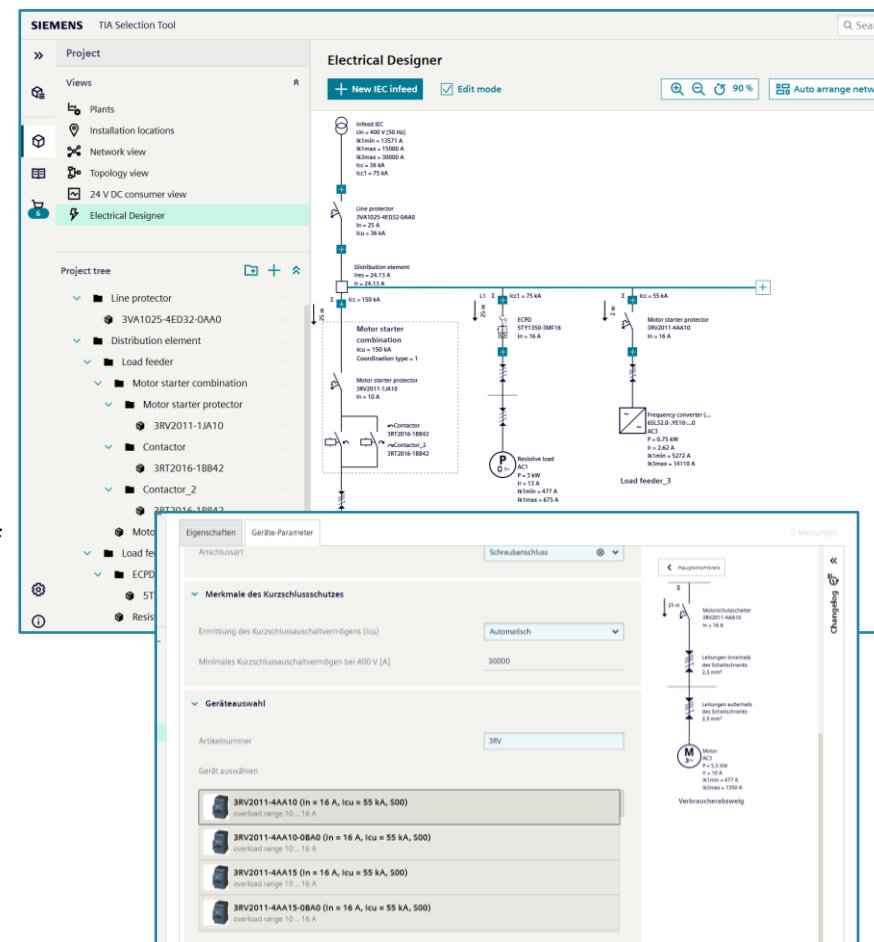
Features of Electrical Designer (cloud version only) – 2025.09

New in version 2025.09

- Design of motor starter combinations for safety applications: Tested motor starter combinations can now be designed for safety applications. The required safety level, the type of overdimensioning and redundancy can be set, and the Electrical Designer calculates suitable motor starter combinations.
- Load feeders with Hybrid Starters (ET 200SP): Load feeders with Hybrid Starters (ET 200SP) can now be configured. The Electrical Designer calculates suitable load feeders with Hybrid Starters according to your inputs and performs a cable dimensioning.
- Motor starter combinations with intelligent link modules (3RC7): Combinations with reversing starter are now supported.
- Excepted circuits: Circuits can be configured below the infeed point that are excluded from switching-off by the main switch. With this functionality it is e.g. possible to design circuits for lighting or connecting equipment for maintenance work.
- Cable dimensioning above distribution elements: Cable dimensioning is now performed for the cable section between the distribution element and the protection device above.
- Flexible adjustment of cable properties: The cable properties can now be set separately for each section.

ATTENTION:

With the exception of load feeders with type tested motor starter combinations and approved protection devices for frequency converters, cable dimensioning is currently in beta status.



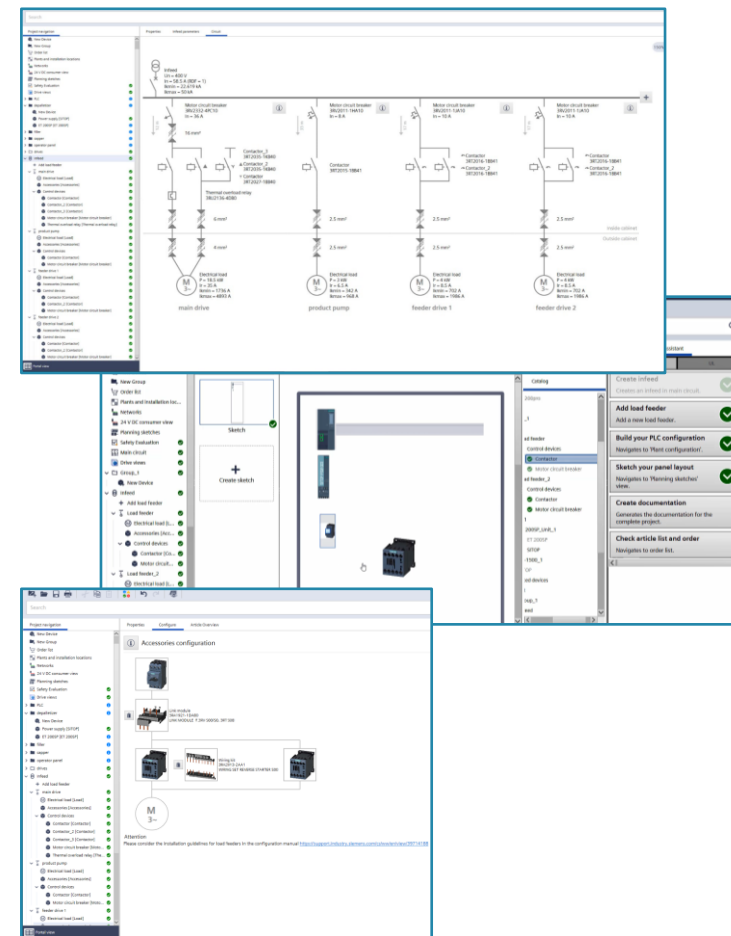
Features of Control Panel Design (desktop version only) – 2025.09

New functionalities – since Version 2023.12

- New frequency converter and drive systems for IEC circuits available.
- Optimized configuration workflow for soft starter combinations for IEC circuits.
- Optimized cable dimensioning for soft starter in IEC and US circuits.
- Minor improvements and bug fixes

ATTENTION:

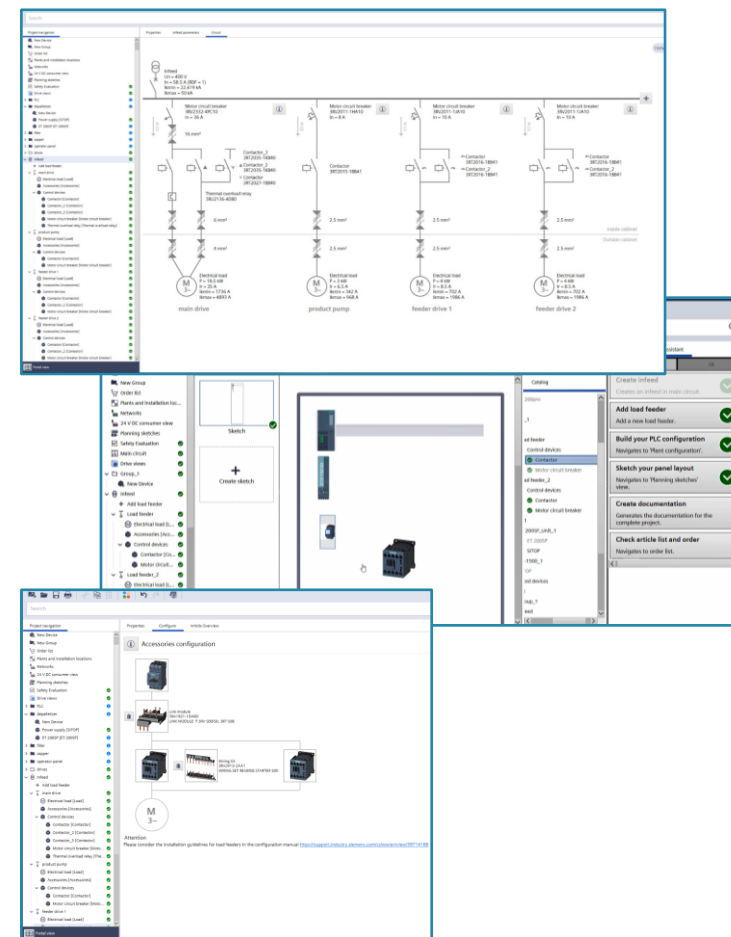
Some features are Beta features and not fully tested. They can contain errors. A hint is shown in the software when you calculate the first device or load feeder combination.



Features of Control Panel Design (desktop version only) – 2025.09

Known issues

- Currently there are no soft starter combinations with 3TF contactors available.
- After loading a project which was saved with an older version of TIA Selection Tool, some load feeders can become invalid and need to be recalculated.



Disclaimer

© Siemens 2025

Subject to changes and errors. The information given in this document only contains general descriptions and/or performance features which may not always specifically reflect those described, or which may undergo modification in the course of further development of the products. The requested performance features are binding only when they are expressly agreed upon in the concluded contract.

All product designations may be trademarks or other rights of Siemens AG, its affiliated companies or other companies whose use by third parties for their own purposes could violate the rights of the respective owner.